

# Human Anatomy and Physiology, new user-interface

A brief guide to help orientate you to our new interface.  
Access the same unrivaled content, in a more contemporary, intuitive and consistent way.

## IMAGE CONTROLS

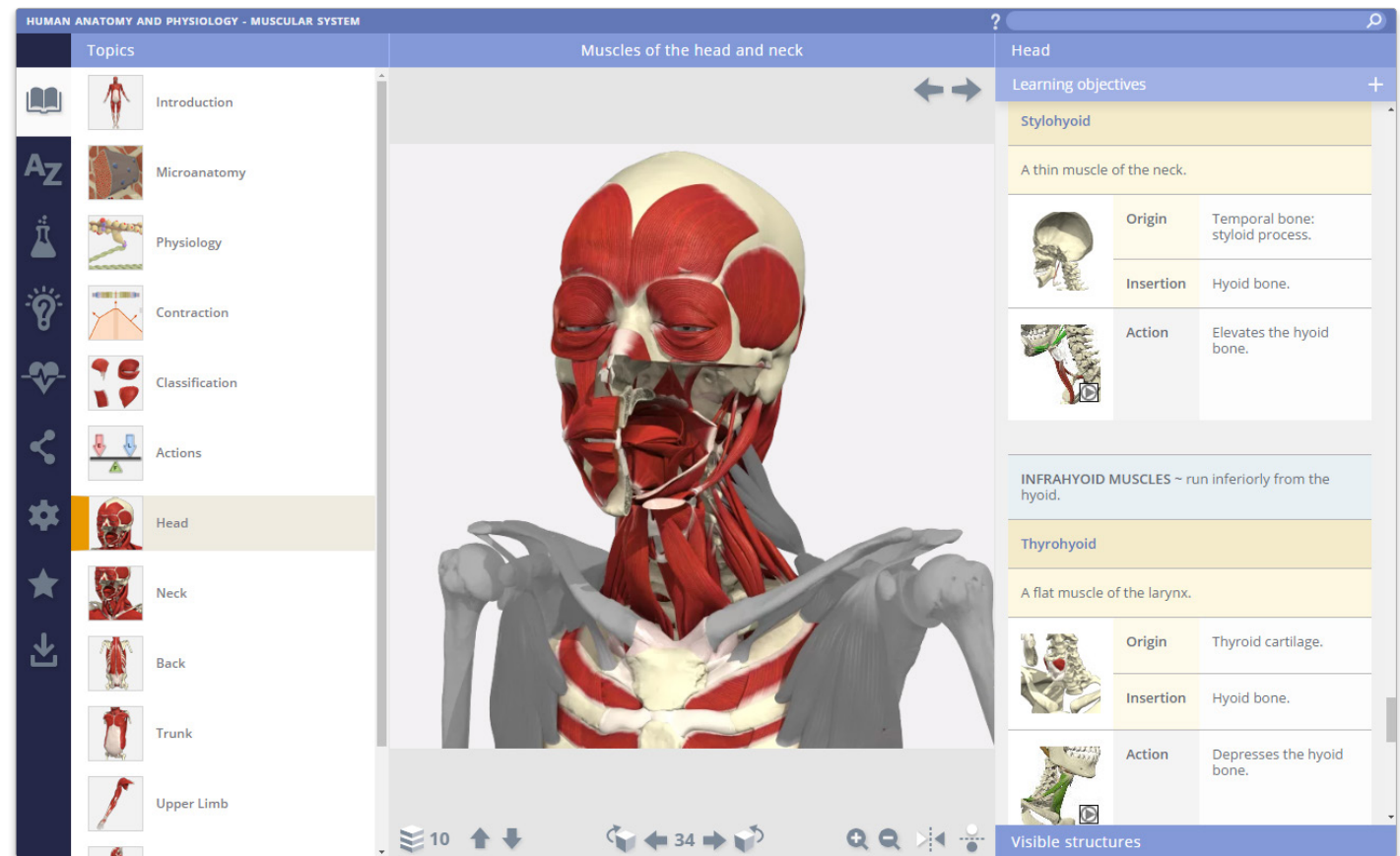
How you interact with the text and images is still very much the same. Use the thumbnails and links in the text to drive the images and movies, and use the rotation, layer and zoom controls beneath the image to navigate a 3D View.

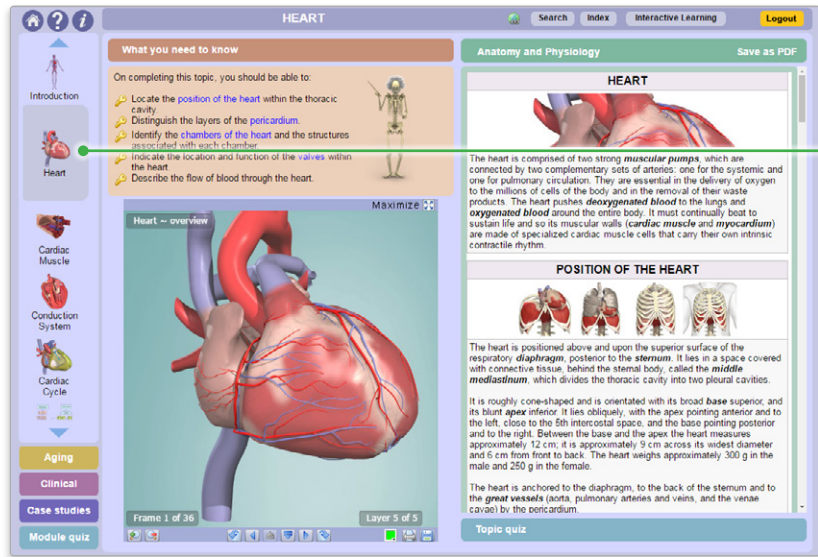
You can now also click and drag to rotate the model. This feature gives a greater feeling of control over the model, helping you understand the three-dimensional nature of anatomical relationships.

## BROWSING

Whilst the core functionality of the products remains the same, to simplify your experience, all the browsing functionality has been moved to the left-hand-toolbar.

Topics, Interactive Learning Activities, Quizzes and the Index can all be accessed here, and any content can be downloaded or shared.

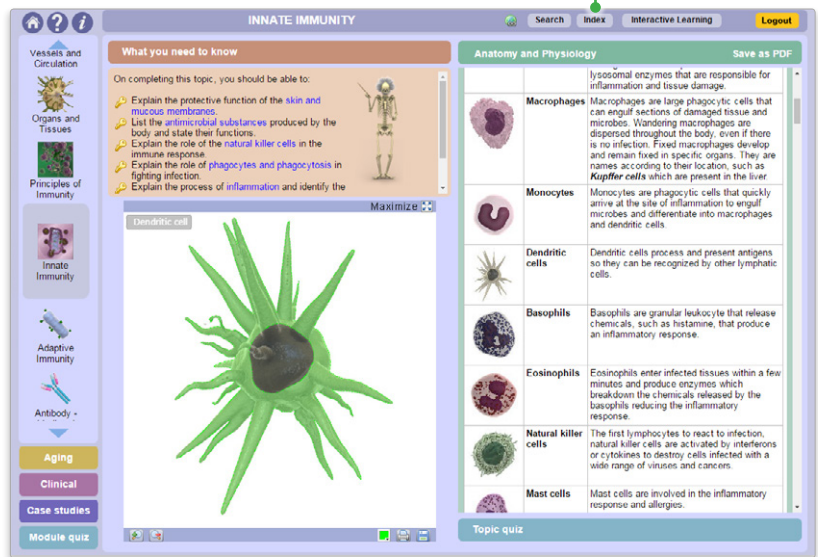
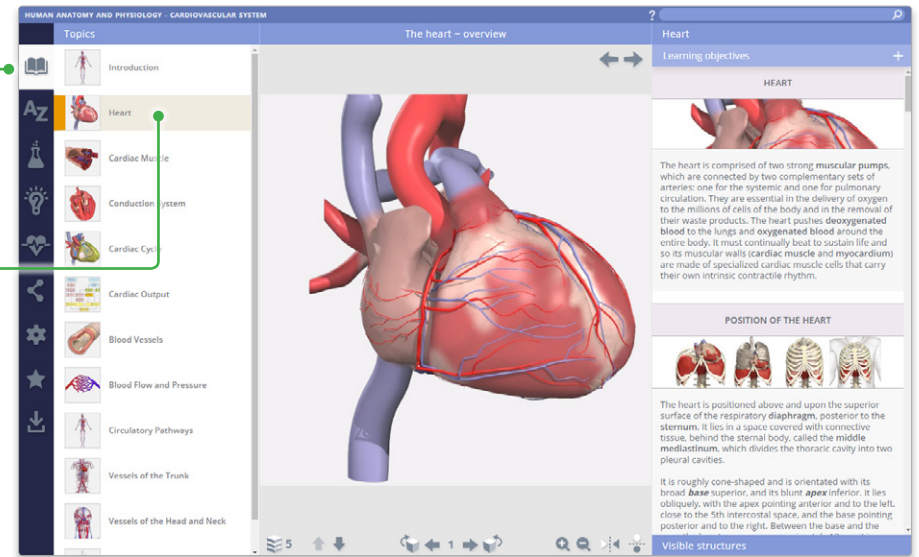




TOPICS

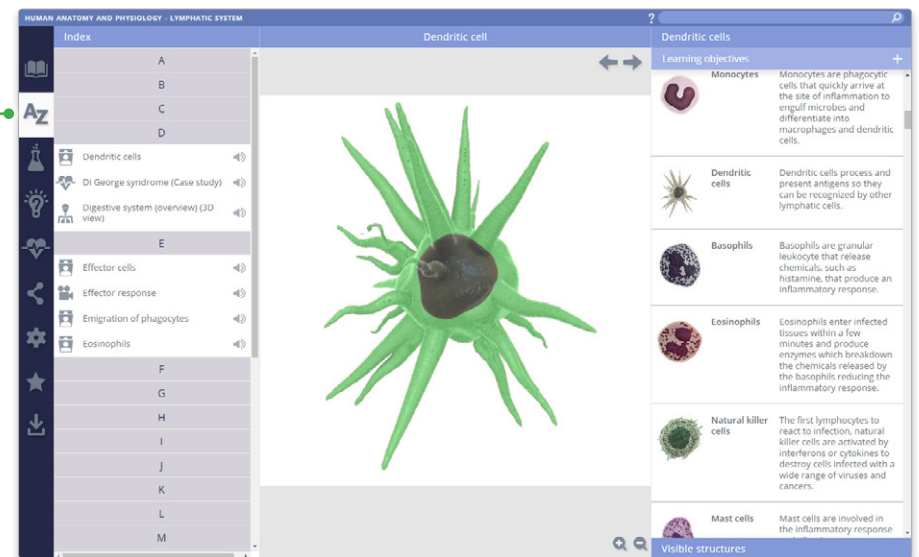
Topics can now be accessed using the top button of the left-hand toolbar.

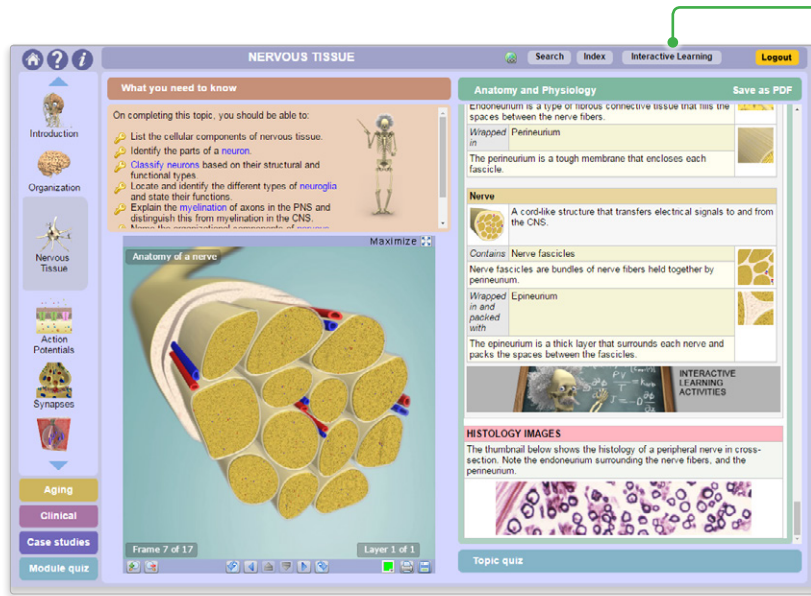
Select a title to display the text and image in the main window.



INDEX

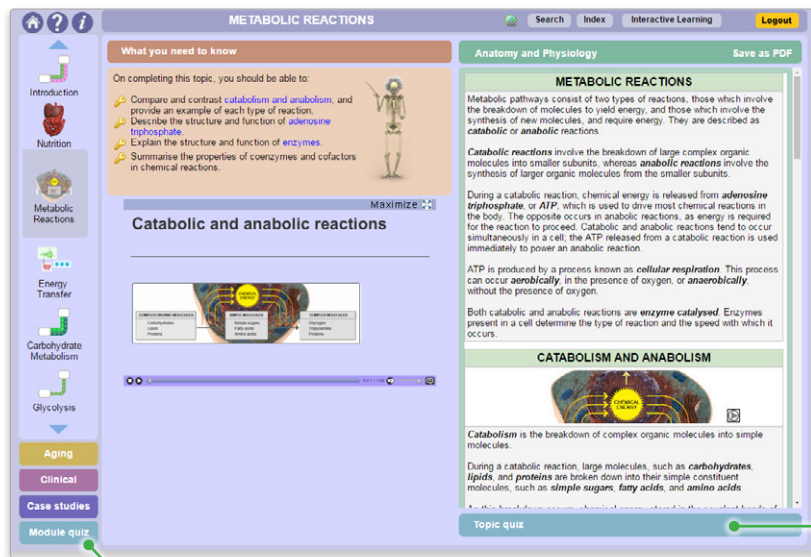
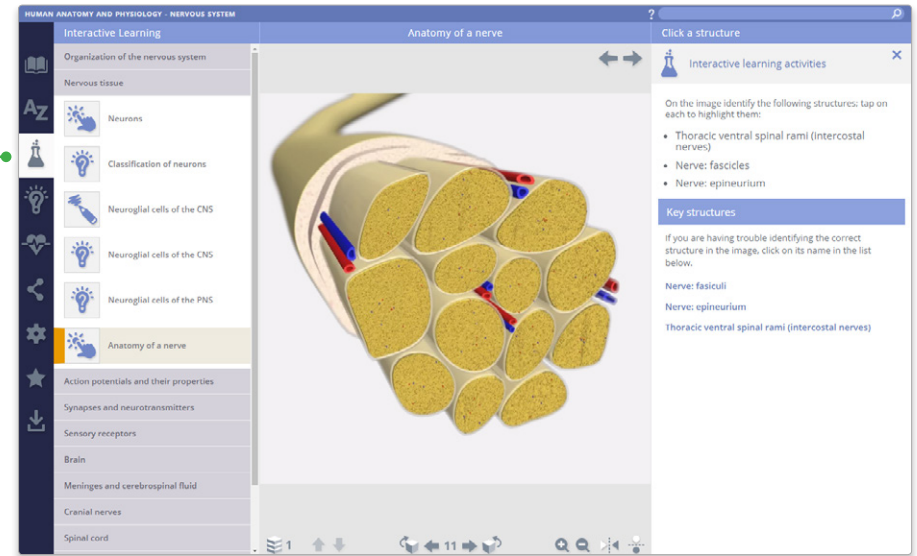
Every Slide, Movie, View and Heading is listed here alphabetically. This allows for fast, efficient retrieval of content across all media types.





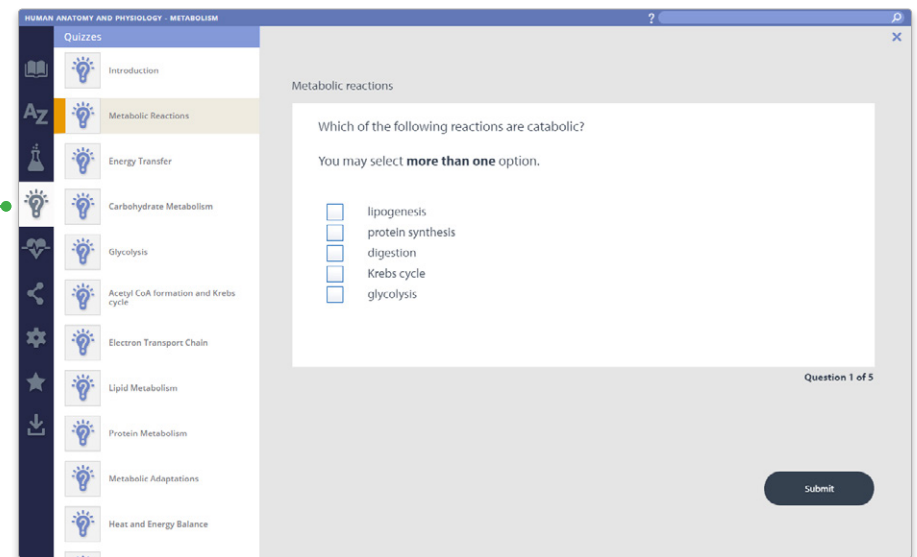
**INTERACTIVE LEARNING**

All the Interactive Learning Activities such as Click-a-Structure, Coloring Books, Quizzes and Fill in the Blanks are listed here, organized by Topic.

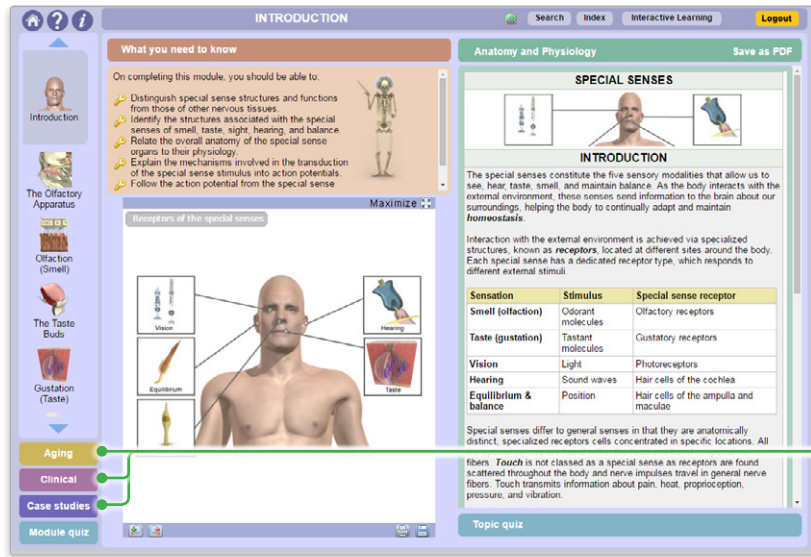


**QUIZZES**

The Topic and Module quizzes can all now be found in the Quizzes pane.

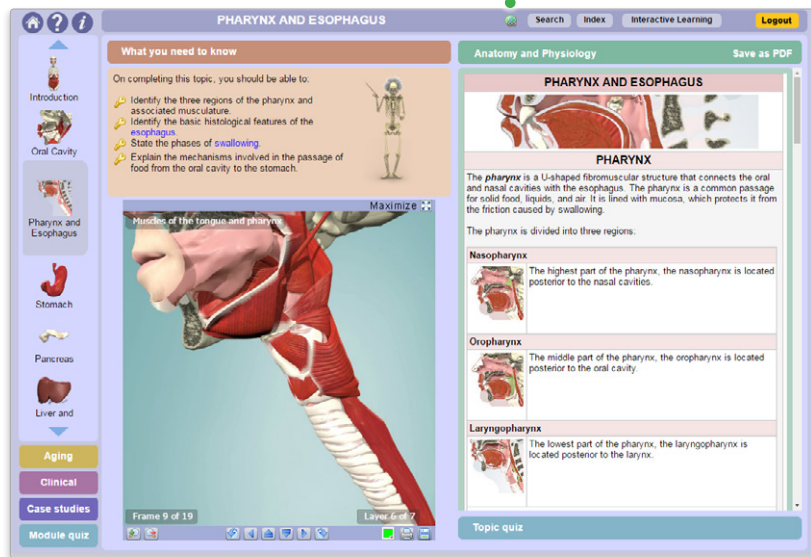
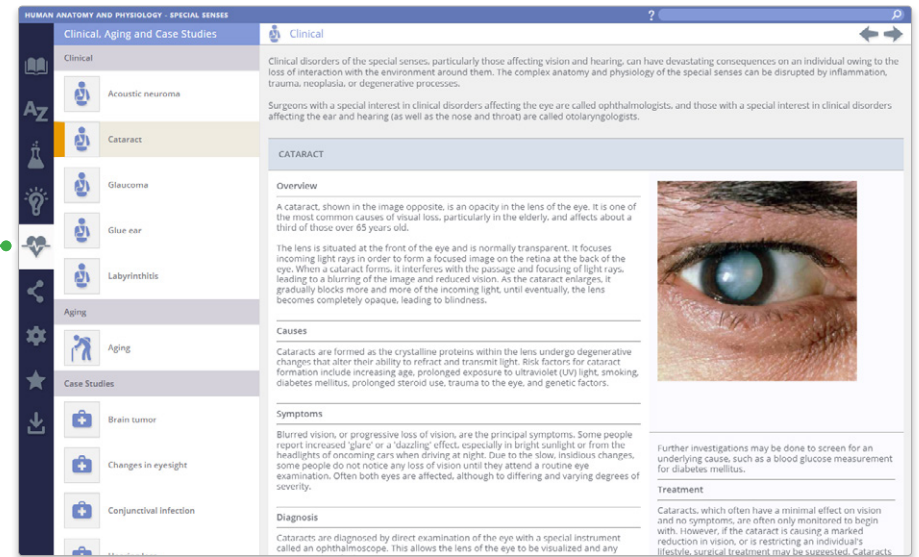






**CLINICAL, AGING, CASE STUDIES**

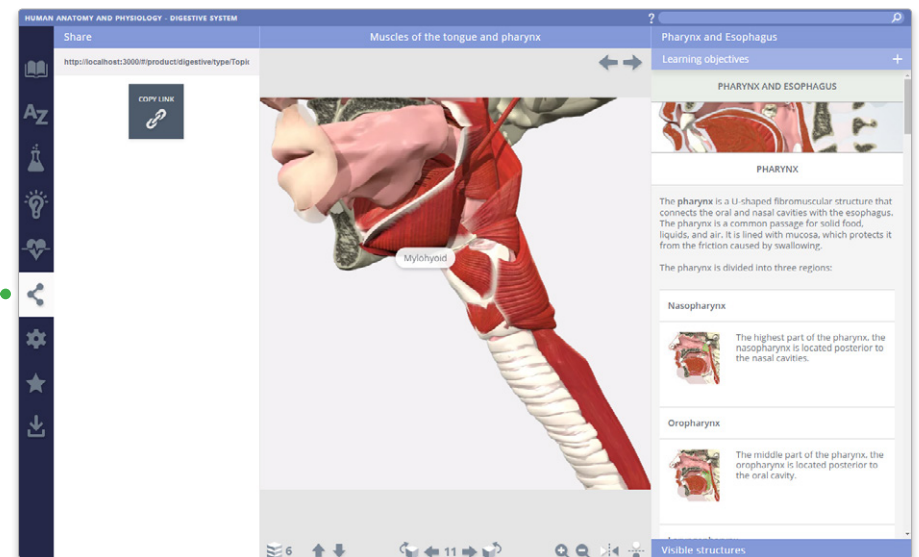
The Clinical, Aging and Case Studies articles are now found in one panel, arranged by type in folders.

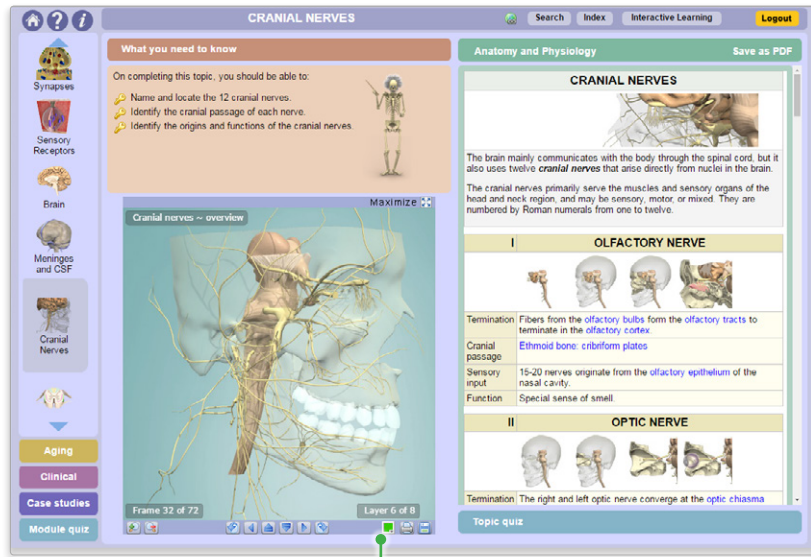


**SHARE**

Copy-weblink is now known as Share. Use the Share link to direct other users to a specific point in the product.

Any copy-weblinks created in the previous interface will be seamlessly redirected to the same content presented in the new HTML5 interface.



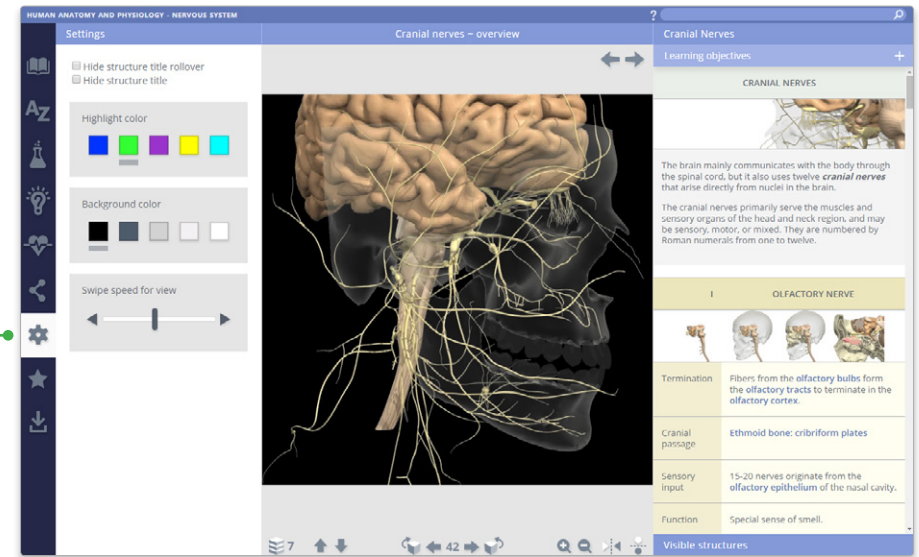


### SETTINGS

Through the customizations in settings, you can now:

- Hide the structure title and rollover labels for self-quizzing or group testing.
- Adjust colors of the highlight or background\* to meet group or personal accessibility preferences.
- Adjust the run-speed at which the views rotate.

\* Currently, background color can only be adjusted in Chrome on PC and Android.

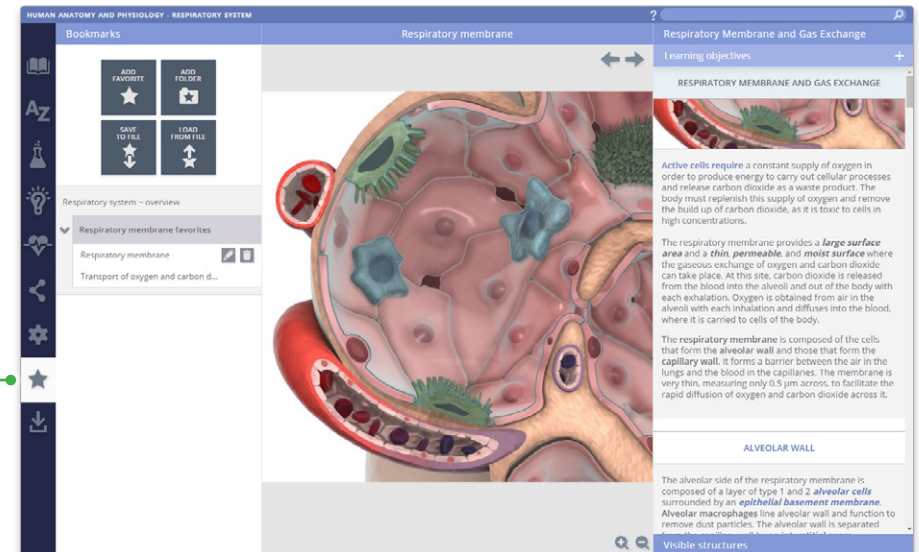


### FAVORITES

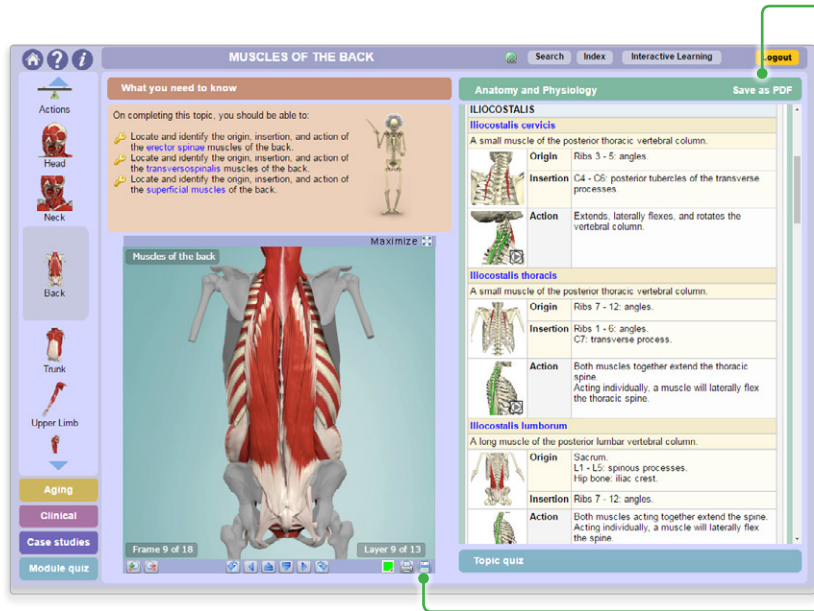
Favorites is a new feature that allows you to save your favorite Primal content.

Favorites can be arranged into folders, renamed, edited and deleted, they are ideal for preparing presentations or lectures.

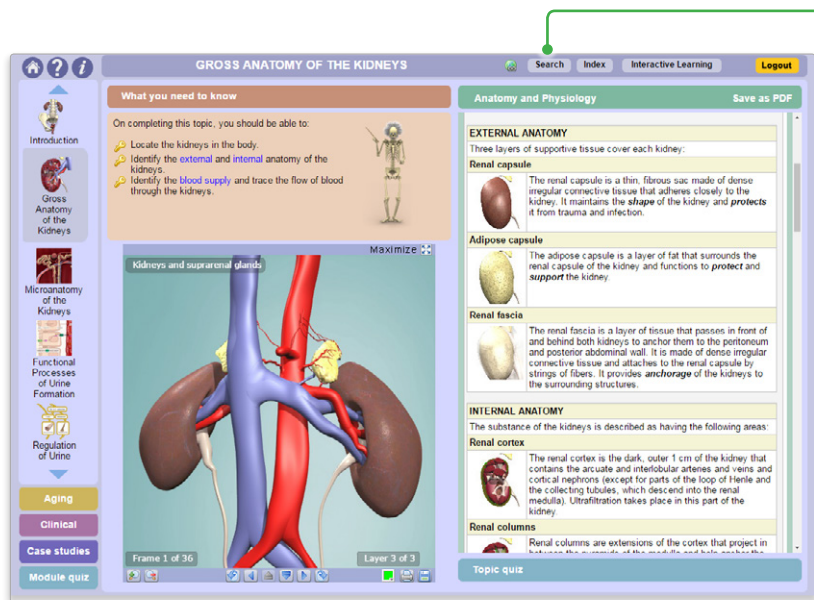
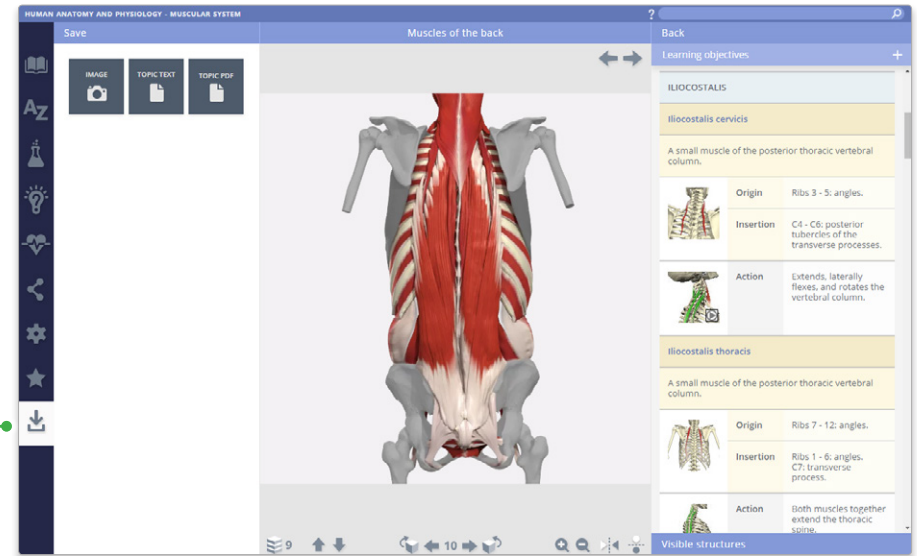
Export and import favorite to access from any device.



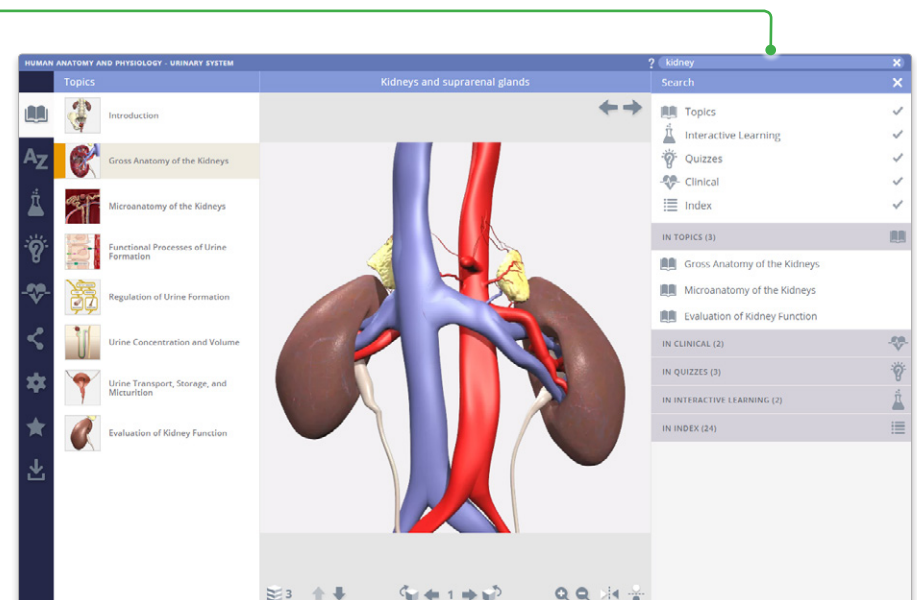


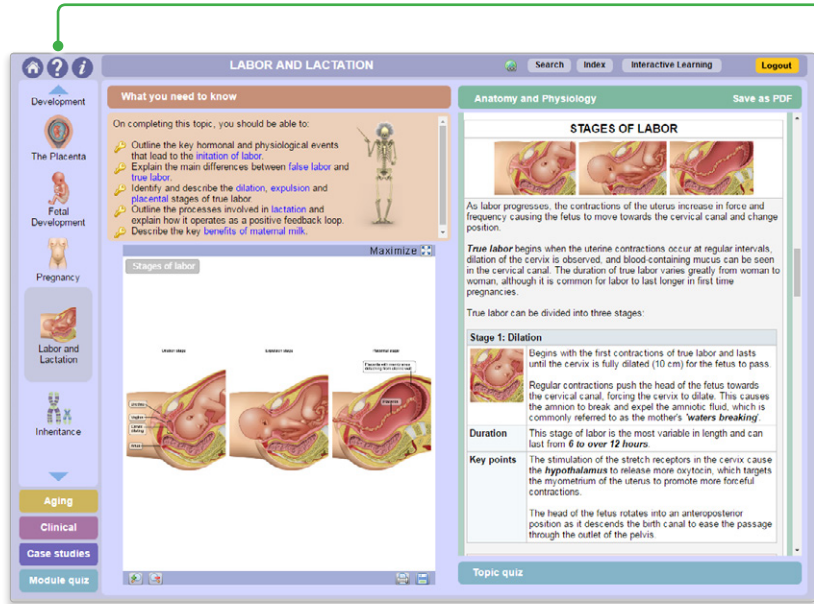


**DOWNLOAD**  
Save images, movies and text directly to your device from one place.

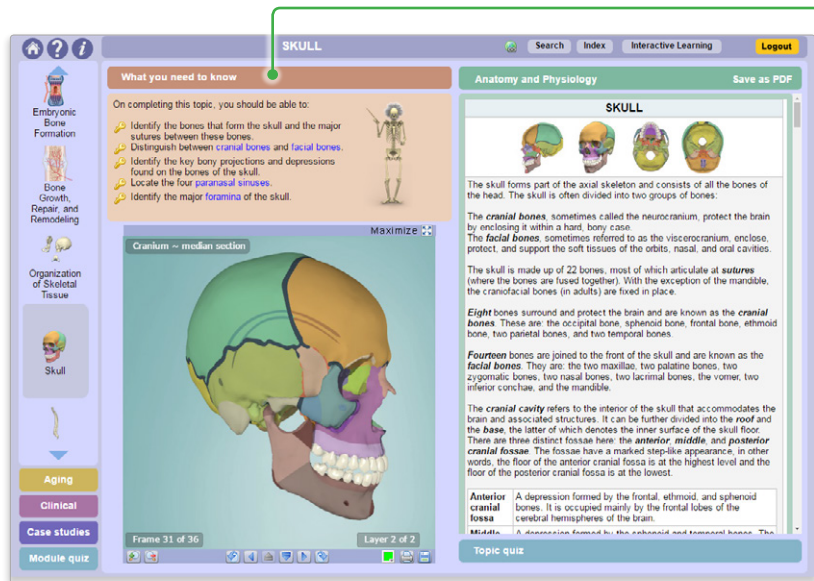


**SEARCH**  
Use the search to find any content type. Use the filters to hone down your results.

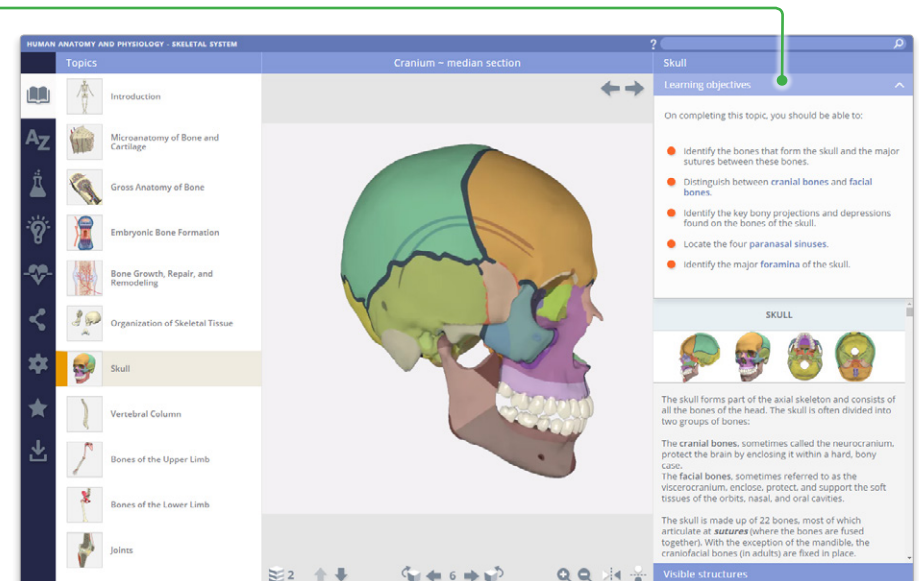




**HELP**  
For more information on how to use the product, please see the Help, for tutorials and a point-and-click guide.  
COMING SOON

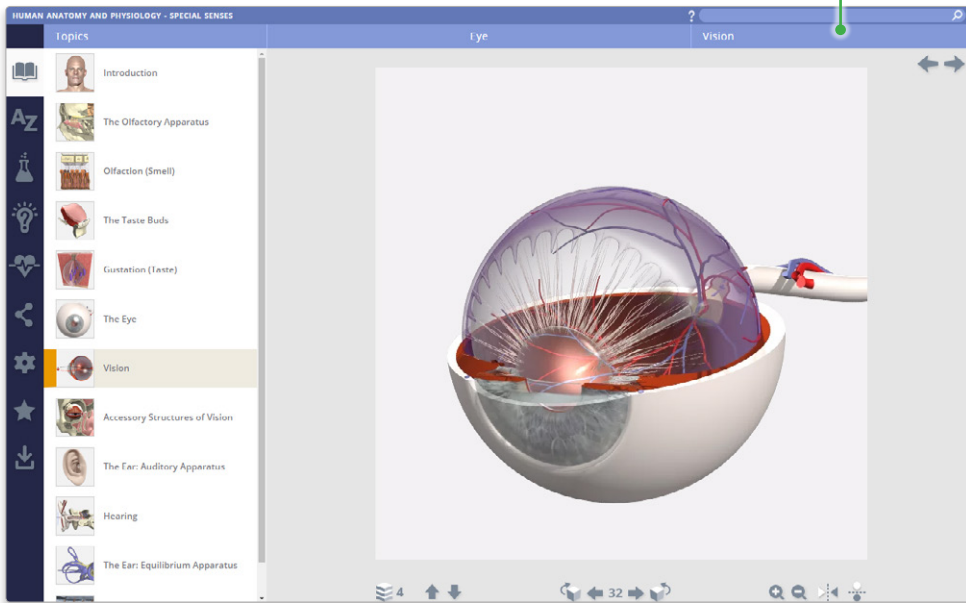


**LEARNING OBJECTIVES**  
What You Need To Know has been renamed Learning Objectives, and now sits above the Topic text.  
To hide this panel, select the Learning Objectives title.

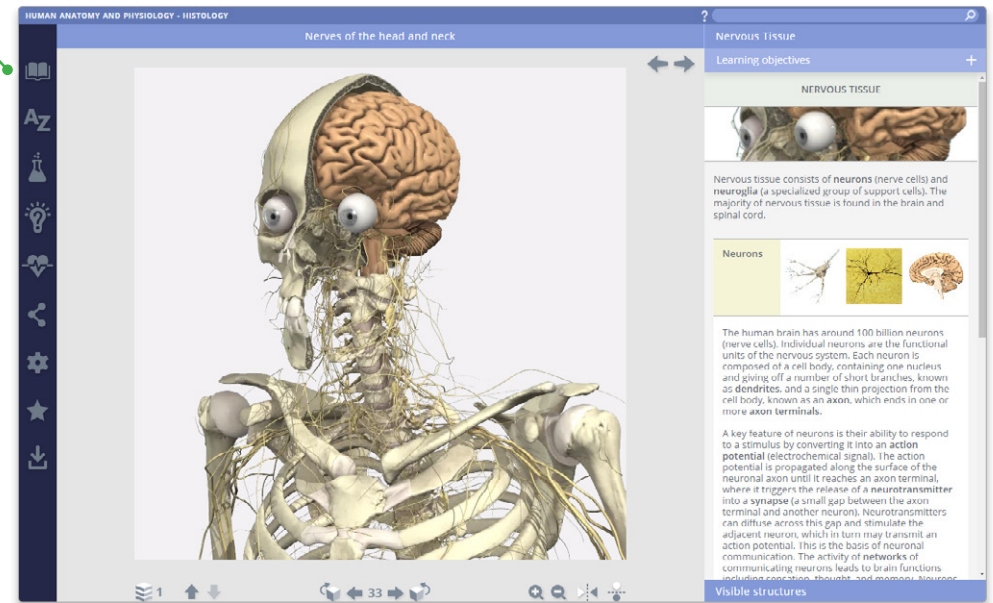




**CLOSING THE RIGHT PANEL**  
Click on the right title header



**CLOSING THE LEFT PANEL**  
Click on the active menu tab



For even more focus, both panels can be closed

