

# Primal's 3D Anatomy and Physiology

## ON iPad

Welcome to our user guide to **3D Anatomy and Physiology** for iPad. Please read on, or select one of the links opposite to jump straight to a particular topic.

### Anatomy.tv –

Getting started	2
Home page	3
Anatomy & Physiology tab	4

### Module interface –

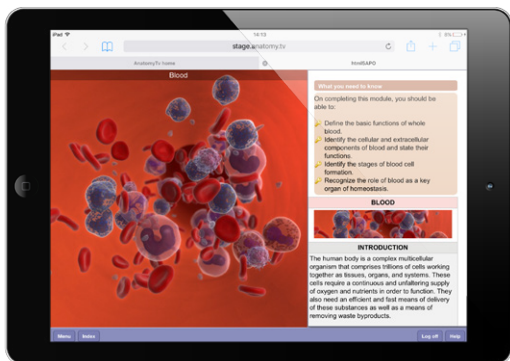
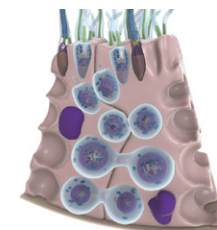
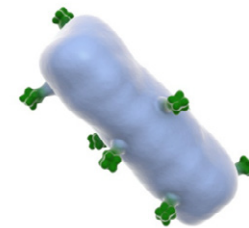
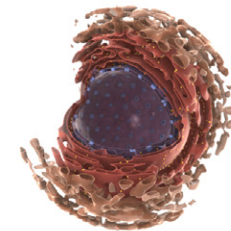
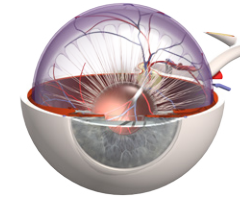
Overview	5
Menu	6
What you need to know	7
Topic text	8
Image window: overview	9
Image window: 3D sequences	10
Image window: layers	11
Image window: selecting structures	12

### Finding content –

Search all modules	13
Index: all modules	14
Index and Search within a module	15

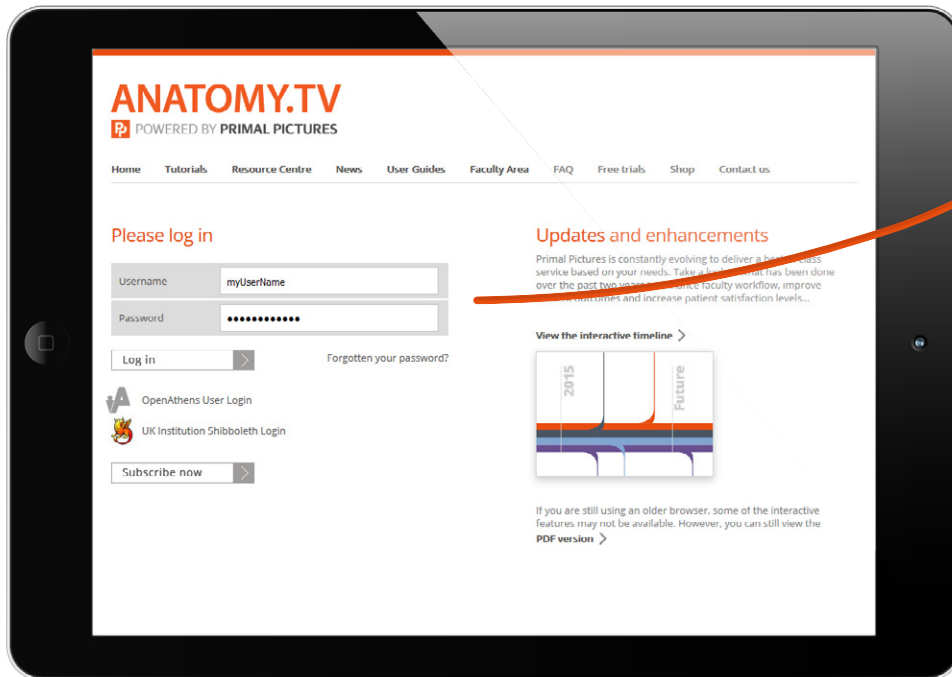
### Additional content –

Aging, Clinical and Case studies	16
----------------------------------	----

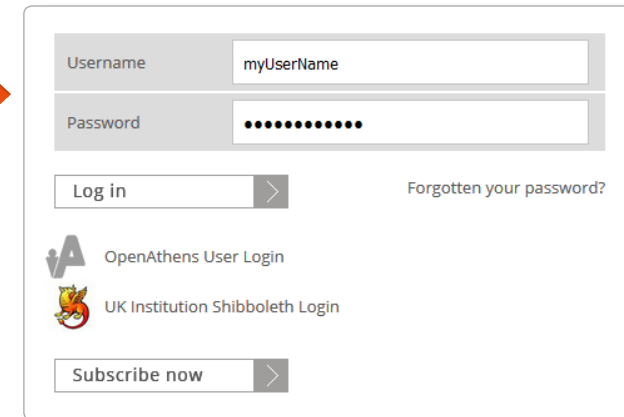


Open your web browser and type [www.anatomy.tv](http://www.anatomy.tv) into your address bar or browser search field.

This takes you to the **Home** page.



To log in to your subscription, please type your username and password in the subscriber login fields shown here:



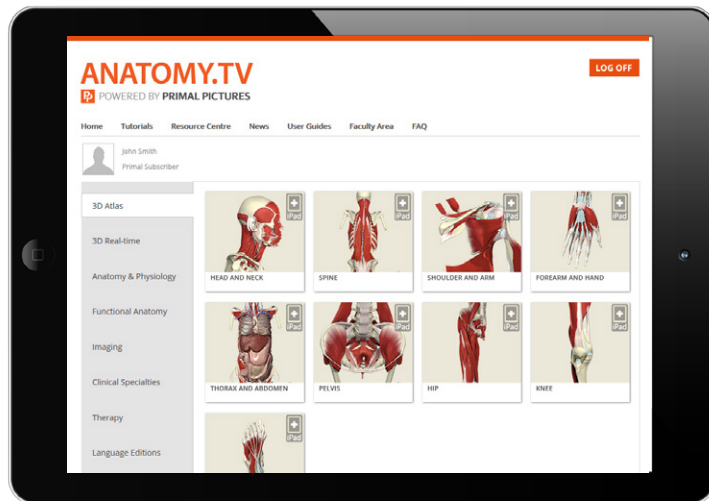
Please note that if your institution is IP authenticated you will be taken to the products page automatically without having to log in, so you will not see this page and login area.

If you are an Athens or Shibboleth user or wish to access our site from a proxy URL you must provide us with the technical information or refer us to your IT department so we can set you up on our system.

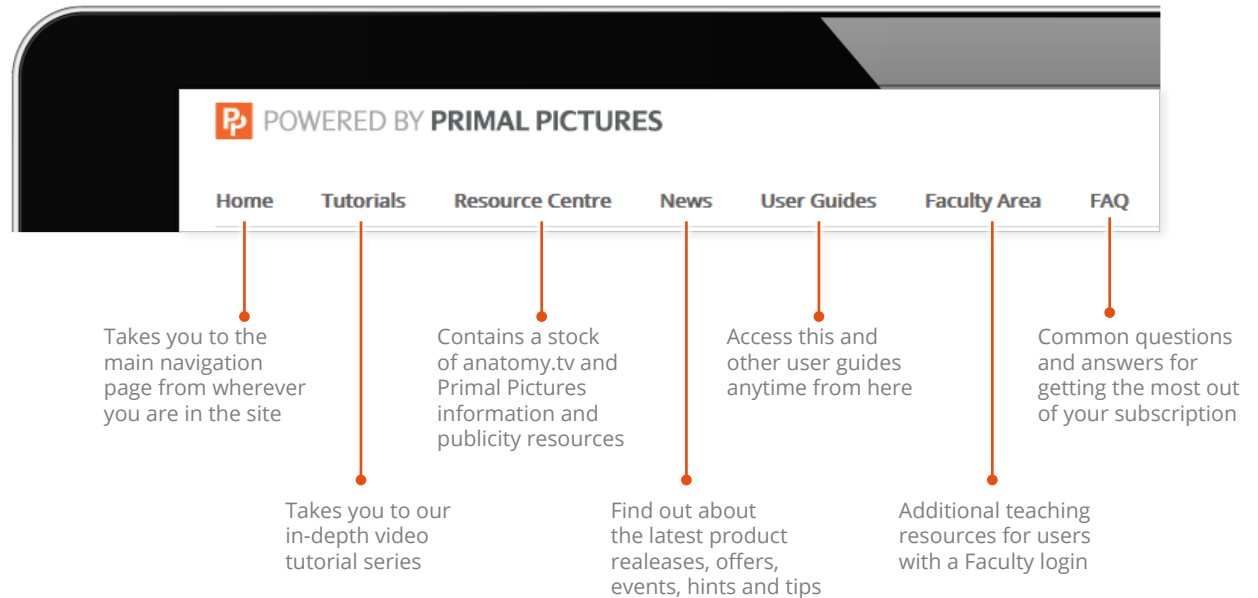
# Anatomy.tv – Home page



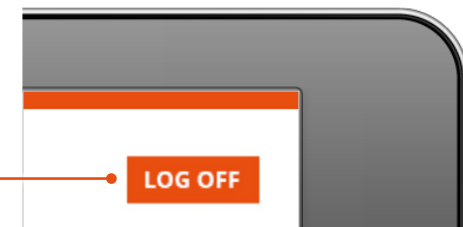
Once you have entered a valid username and password you'll be taken to the product launch area of the **Home** page.



The top navigation bar offers a number of useful links...



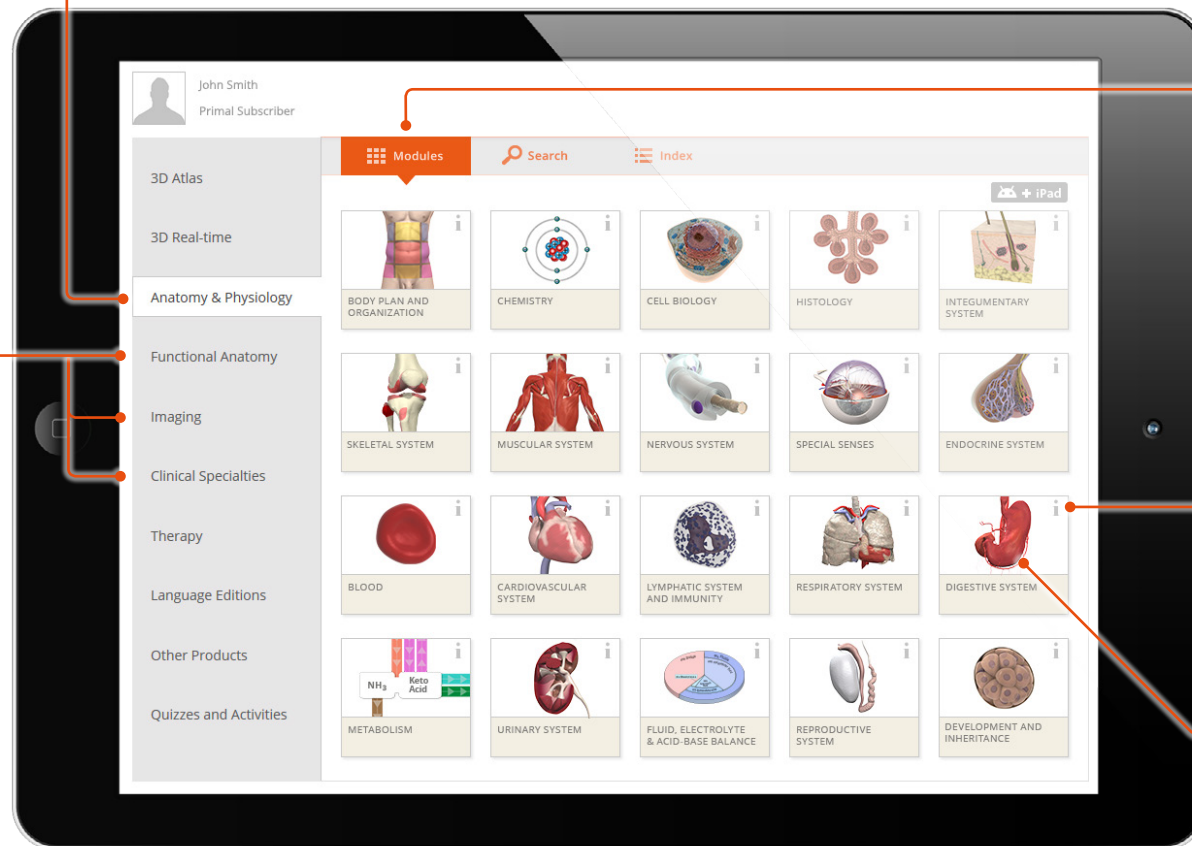
Once you have finished your session, please ensure you use the **LOG OFF** button or you may not be able to log in again until after the time-out period (default time-out is 15 minutes)



# Anatomy.tv – Anatomy & Physiology tab



Select the **Anatomy & Physiology** tab to show the module launch tiles.



Any other anatomy.tv titles you have access to will appear on the other tabs

The **Modules** tab is selected by default. When selected you can see all the module launch tiles

Selecting the 'i' information icon allows you to preview the content of an individual module. You can then launch that module from the preview box...

... alternatively, if you wish to launch the module straight away, select the picture tile itself

# Module interface – Overview



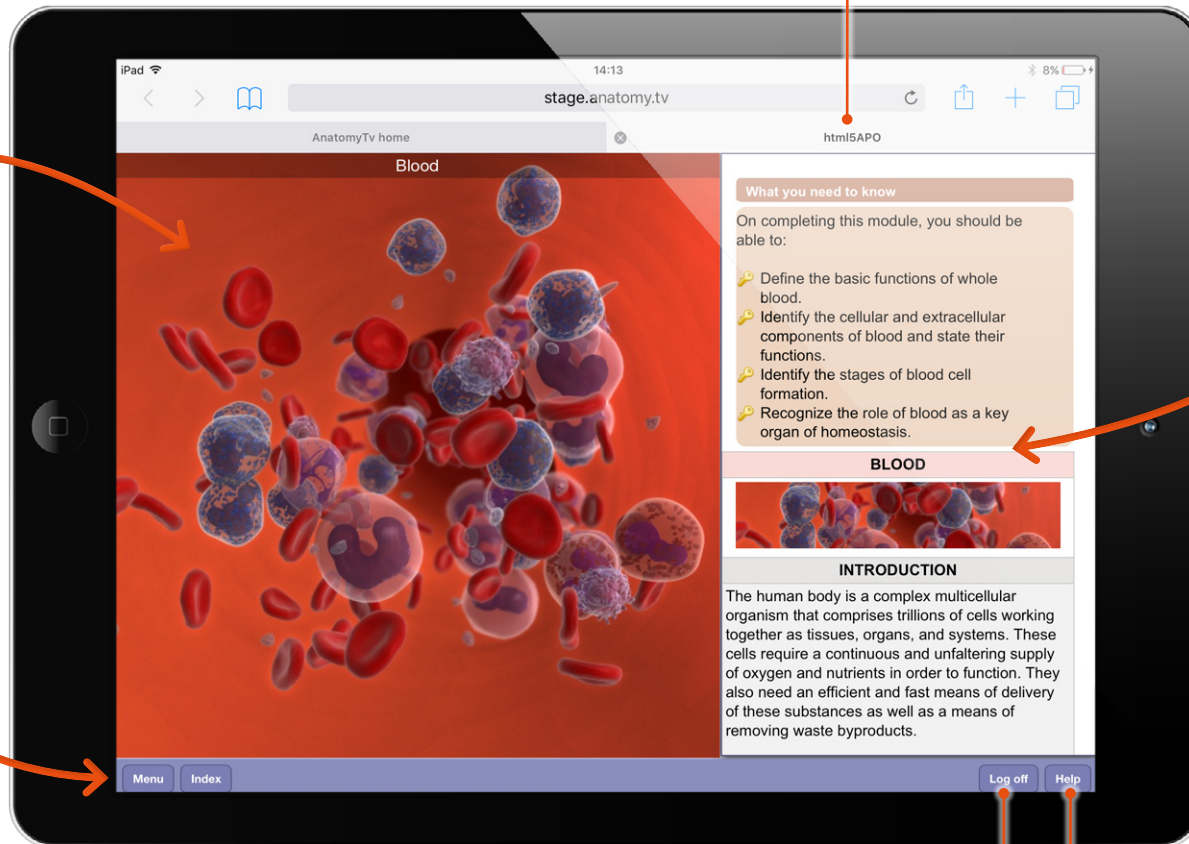
Once you have selected a module it will appear in a separate browser tab.

The module interface is split into three main areas.

Image window

Menu and Index

Text pane



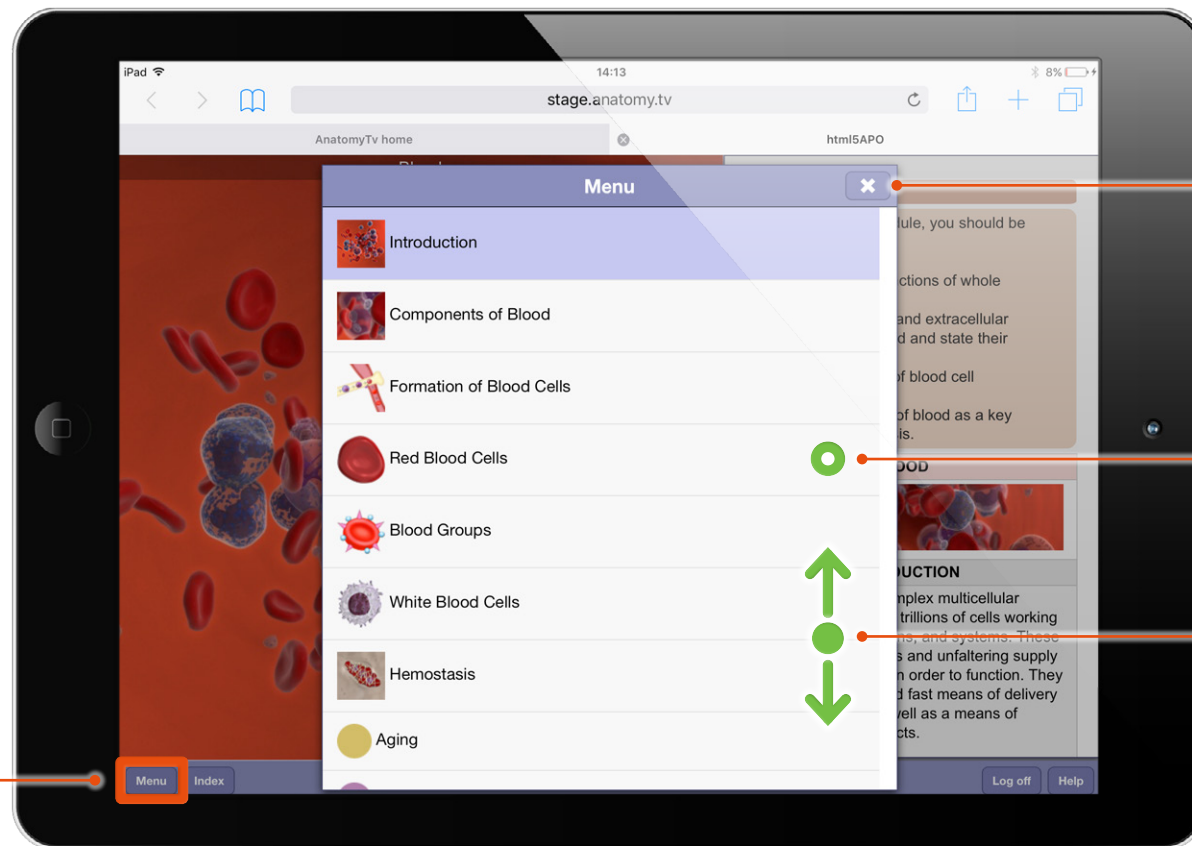
Use this button to log out of your anatomy.tv session

A brief quick start guide is available here

# Module interface – Menu



Each module is divided into several topics, which can be accessed via the **Menu** button.



1 Tapping the **Menu** button brings up a list of the module's topics

4 Once you have selected a topic, close the menu by tapping on the **Close** button

3 Select a topic by tapping on it

2 Drag up and down to see the full list of topics

- = TAP
- = PRESS AND HOLD

# Module interface – What you need to know



The **What you need to know** section appears at the top of the text pane.

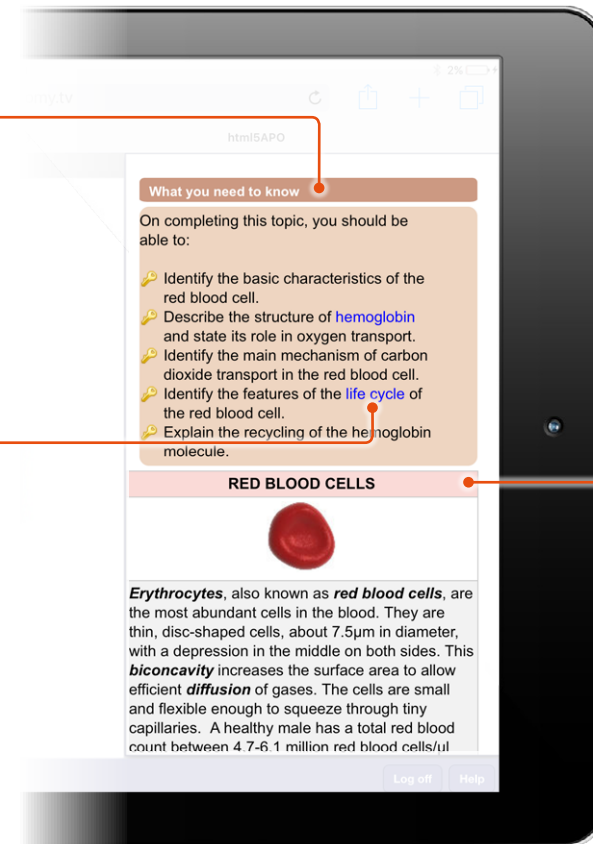
1

## What you need to know

This area contains a series of learning objectives describing the key anatomy and physiology content covered within each topic

The objectives can also be used as revision aids when you come to review the topic

If you need to revise any content, the blue links within each set of objectives take you directly to the relevant place in the **Topic text**



2

Topic text  
See next page

# Module interface – Topic text

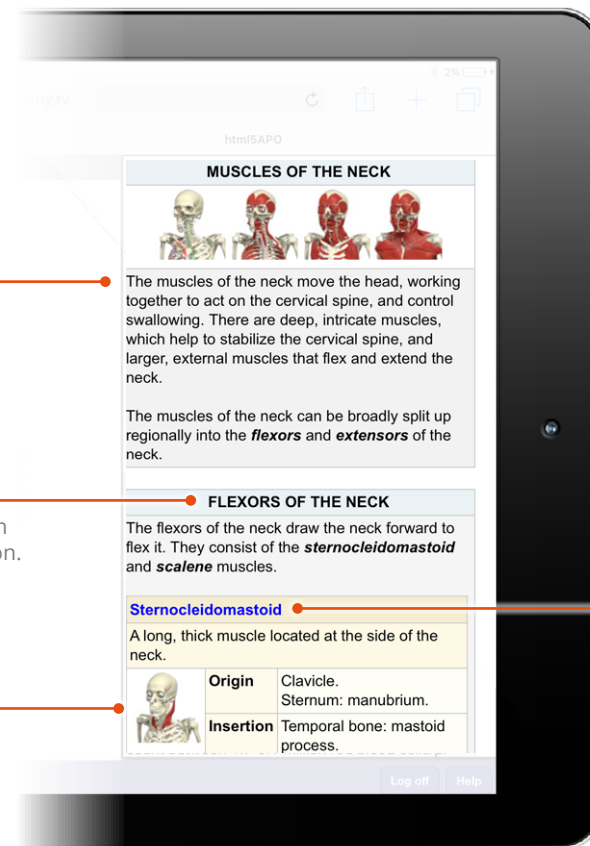


The **Topic text** follows on from the **What you need to know** section, and is presented in easily digestible units of information to help facilitate learning.

Each topic page begins with introductory text, providing an overview to the subjects covered in that page

The Anatomy and Physiology content is then broken down into small tables of information. These are clearly marked by a topic title

You may also find additional tables containing images relating to the topic text. Tapping on these thumbnails will open the images in the main **image window**



The muscles of the neck move the head, working together to act on the cervical spine, and control swallowing. There are deep, intricate muscles, which help to stabilize the cervical spine, and larger, external muscles that flex and extend the neck.

The muscles of the neck can be broadly split up regionally into the **flexors** and **extensors** of the neck.

### FLEXORS OF THE NECK

The flexors of the neck draw the neck forward to flex it. They consist of the **sternocleidomastoid** and **scalene** muscles.

#### Sternocleidomastoid

A long, thick muscle located at the side of the neck.

	<b>Origin</b>	Clavicle. Sternum: manubrium.
	<b>Insertion</b>	Temporal bone: mastoid process.

Tapping on blue text links will highlight the relevant anatomy structure on a 3D model in the main **image window**



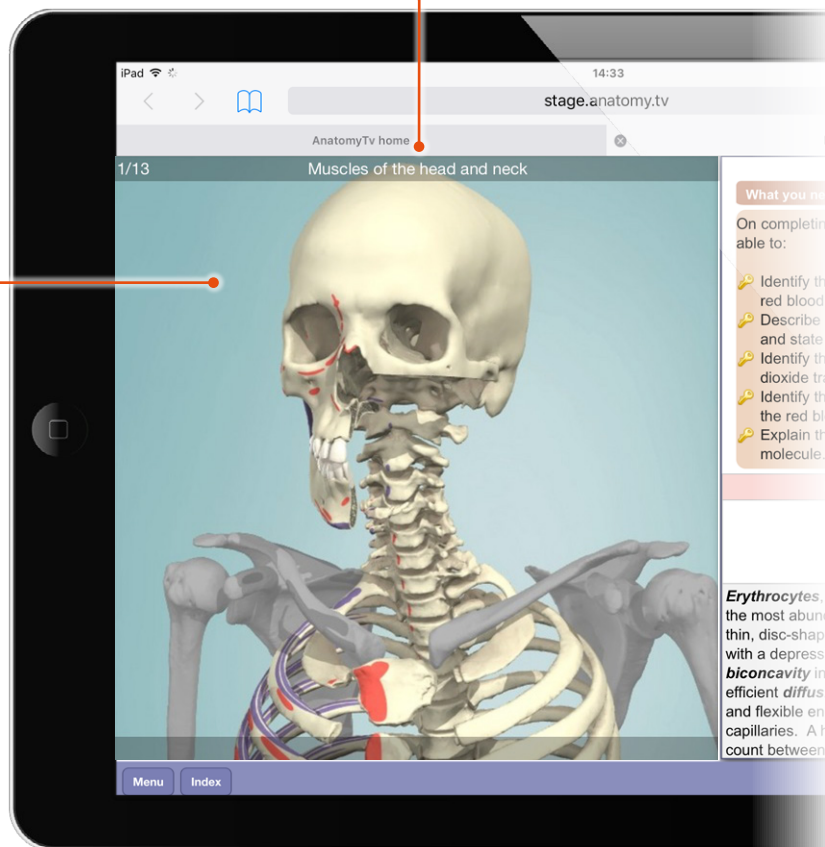
# Module interface – Image window: overview



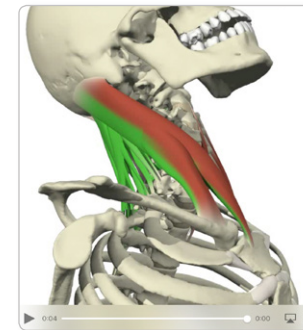
## Image window

The image window can show 3D sequences, animations, illustrations, clinical slides and dissection slides

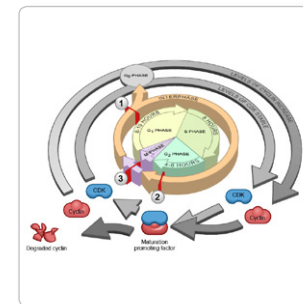
3D SEQUENCE



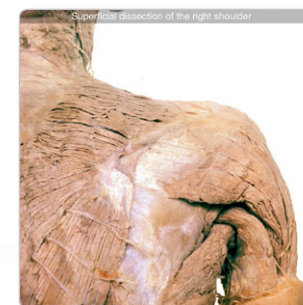
## ANIMATION



## ILLUSTRATION SLIDE



## DISSECTION SLIDE



# Module interface – Image window: 3D sequences

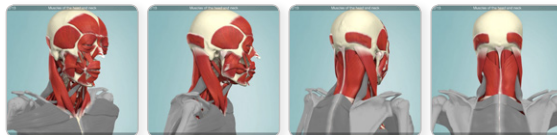


Every 3D view features a sequence of images. These sequences usually take the form of rotations, enabling you to study the anatomy through 360 degrees.

Use touch gestures to interact with these sequences.

## MOVING THROUGH A SEQUENCE

Touch and swipe left and right anywhere on the viewing pane to move back and forward through the sequence.

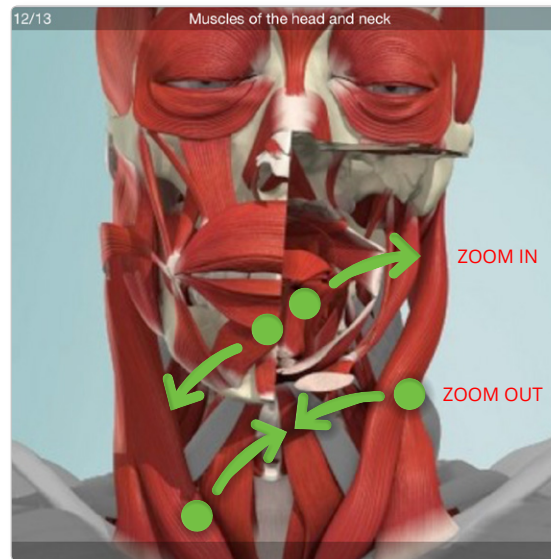


HORIZONTAL ROTATION SEQUENCE

## ZOOMING

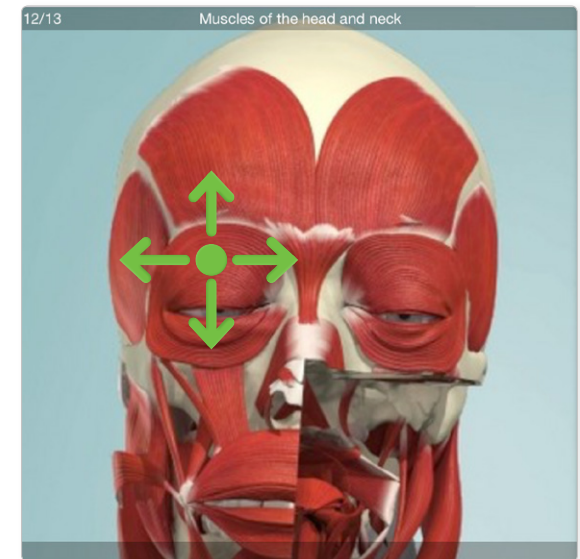
Place two fingers anywhere on the viewpane, then move your fingertips apart to zoom in.


To zoom back out, place two fingers on the viewpane and pinch inwards. You can resume rotating the model once back to the default zoom level.



## PANNING

When zoomed in, place your finger on the viewpane and drag in any direction to pan around the image.



-  = TAP
-  = PRESS AND HOLD

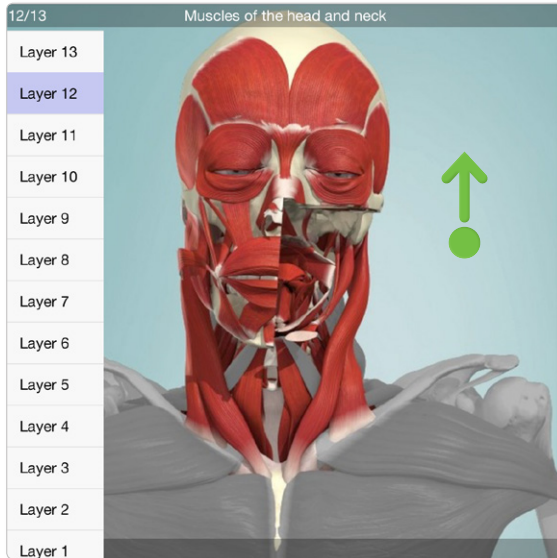
# Module interface – Image window: layers



Each 3D view has numerous layers, enabling you to explore the relationships between different anatomical structures.

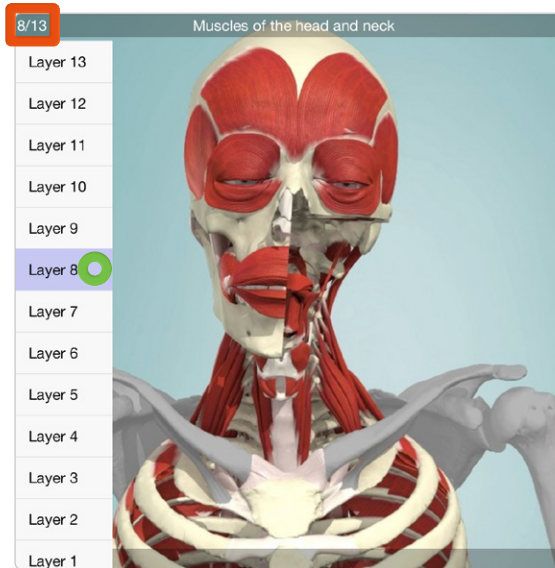
## SHOW THE LAYER MENU

Touch and swipe upwards anywhere on the viewing pane to reveal the layer selector.



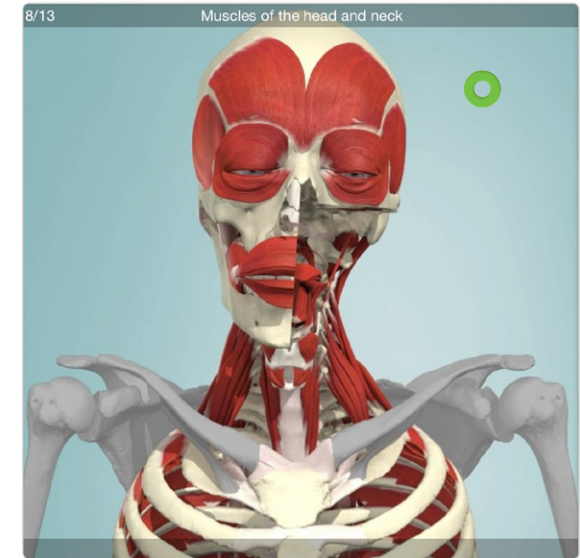
## SELECT A LAYER

Tap to select a different layer. You can see which layer you are currently on at the top left of the viewpane.



## HIDE THE LAYER MENU

To return to the full view, tap anywhere on the viewpane.



MOVING UP THROUGH THE LAYERS

- = TAP
- = PRESS AND HOLD

# Module interface – Image window: selecting structures

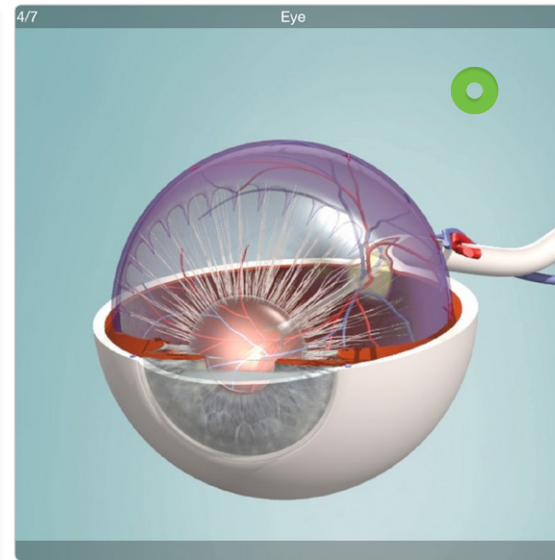
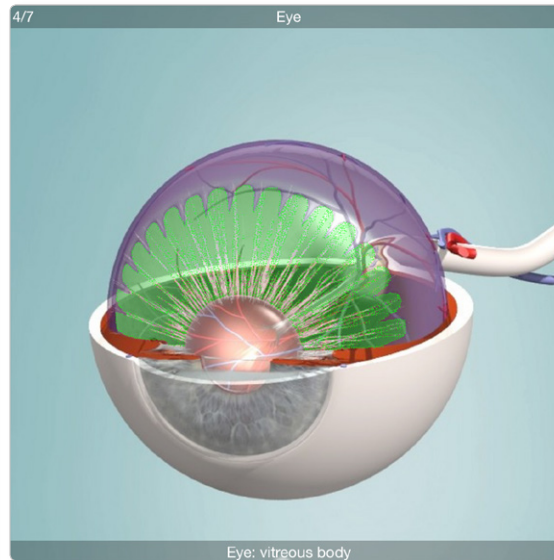
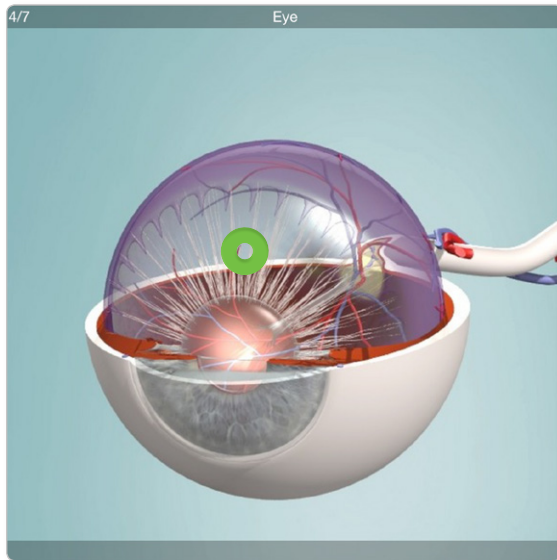


Every structure in our 3D sequences and 3D views is selectable.

To select a structure, simply tap on it.

The selected structure will highlight green and the structure name will appear at the bottom of the Image window.

To deselect a structure, tap on a background area of the viewpane.

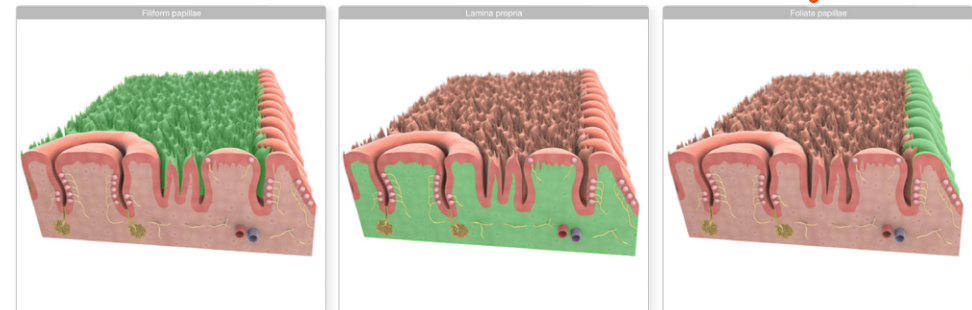


The name of the selected structure appears here

3D illustrations are also selectable.

The name of the selected structure appears here

- = TAP
- = PRESS AND HOLD



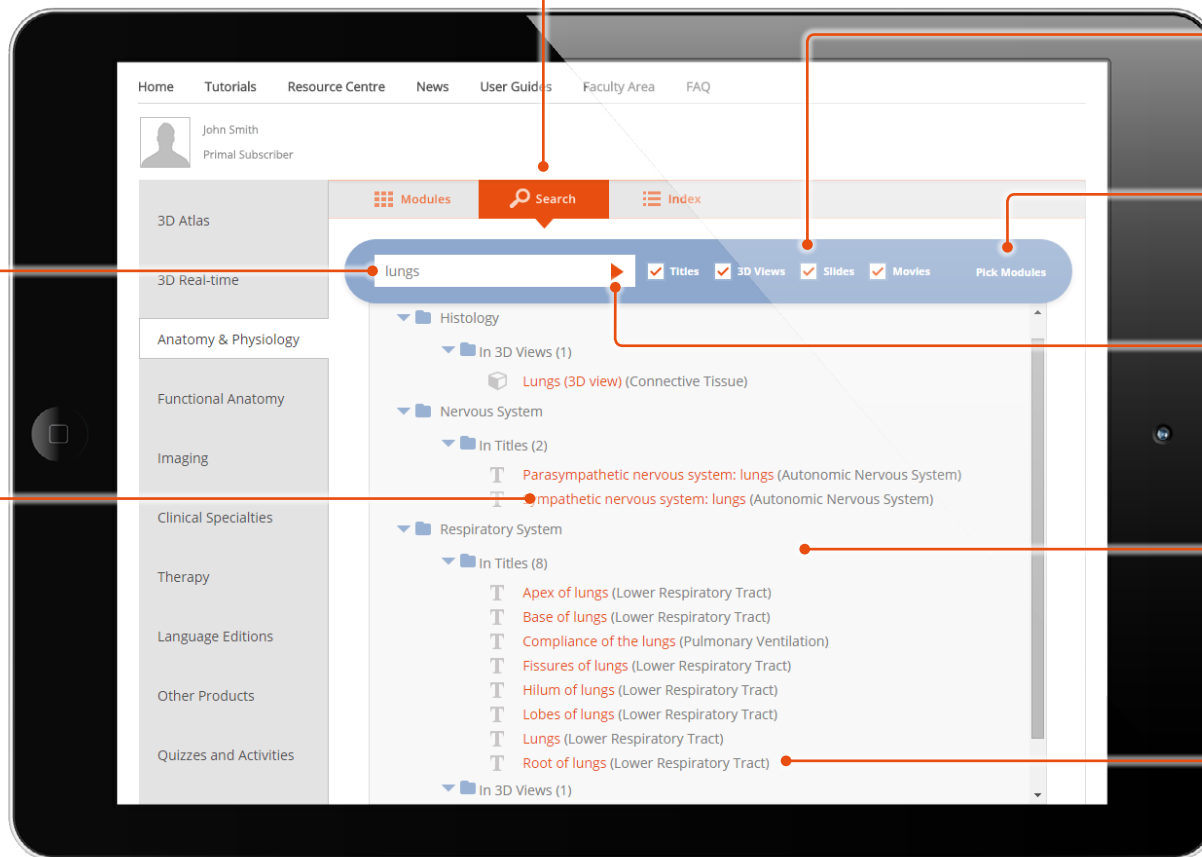
# Finding content – Search all modules



If you know the name, or part of the name, of a structure you can locate it using the **Search** feature on the main Anatomy & Physiology tab.

1  
Type your search term here

7  
Tapping on the orange link will open the associated module in a new tab and show the relevant content



2  
You can narrow your search to only certain types of content using these checkboxes

3  
Use the **Pick Modules** feature if you wish to limit your search to only certain modules

4  
Tap on the orange arrow, or press **Go** on your keyboard, to display the search results

5  
Your results will appear here, grouped by module, then by content type: Title, Slide, Movie, 3D View or Topic

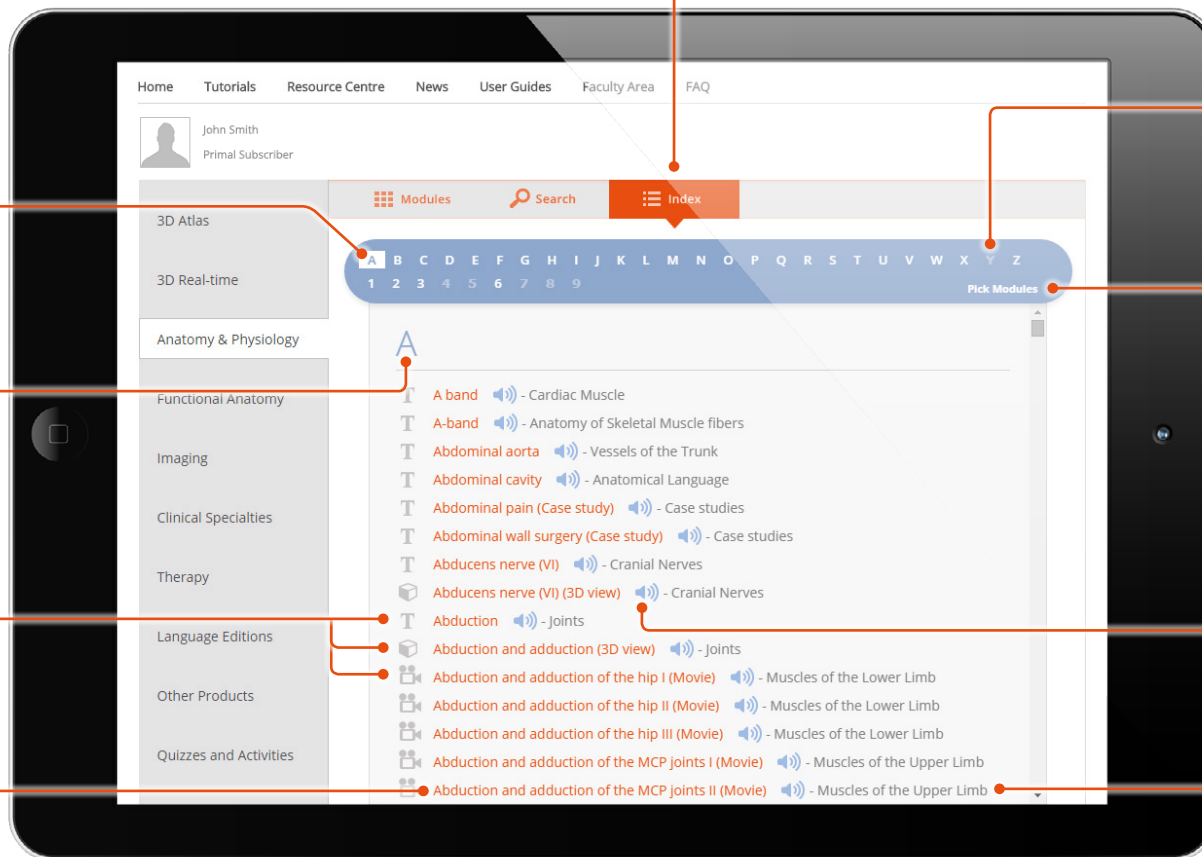
6  
The gray text shows which topic title the search result falls under



# Finding content – Index: all modules



The **Index** tab on anatomy.tv provides links to content throughout all of the Anatomy and Physiology modules.



1

Select the initial letter (or number) of the content you wish to locate

2

Select the initial letter (or number) of the content you wish to locate

7

The type of content is indicated by the icon preceding the link: Title, Slide, Movie, 3D View or Topic

8

Tapping on the orange link will open the associated module and show the relevant content

3

Faded characters indicate that there is no content with that initial letter (or number)

4

Use the **Pick Modules** feature if you wish to limit your search to only certain modules

5

Tapping on the speaker icon allows you to hear the pronunciation of that structure name, or term

6

The gray text shows which topic title the index entry falls under

# Finding content – Index and Search within a module



To search for content **within** a particular module use the **Index** button on the module's bottom toolbar.

1

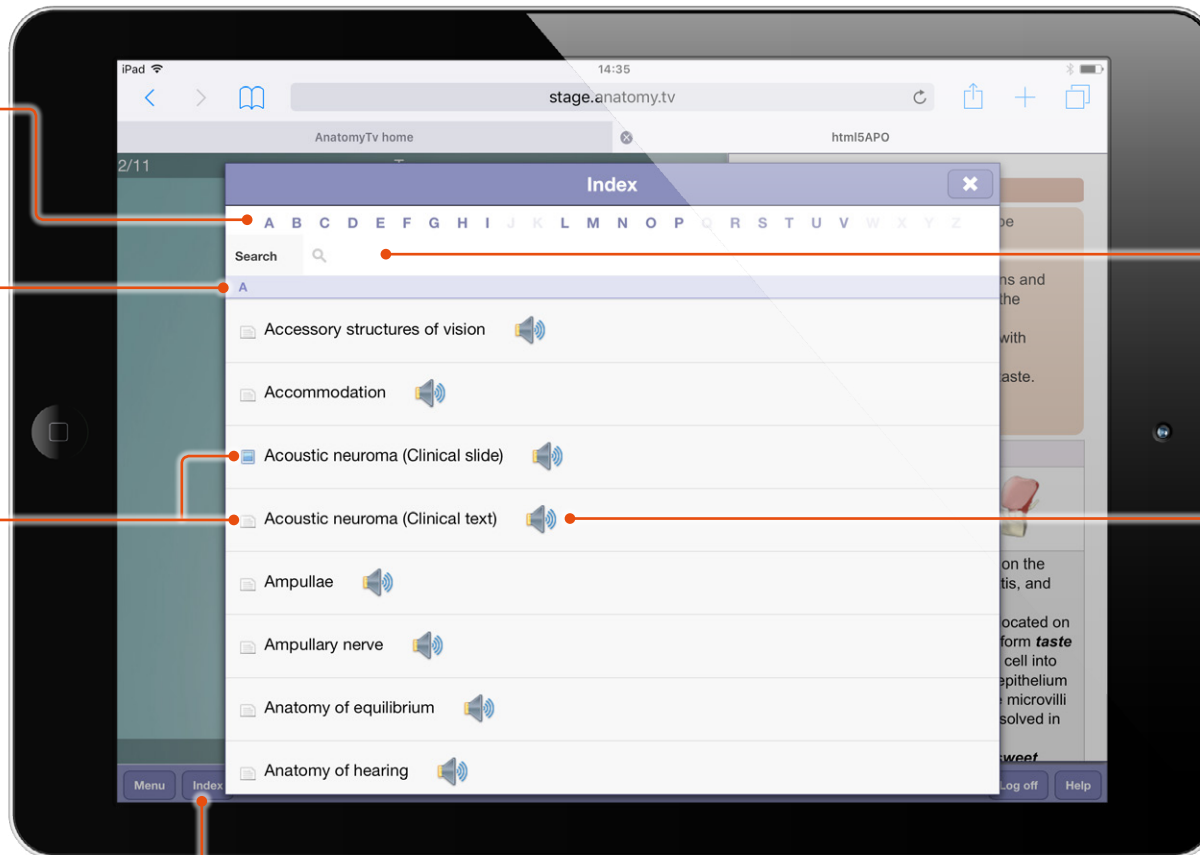
Select the initial letter of the content you wish to locate

2

The Index will scroll to the initial letter (or number) you have selected

5

The type of content is indicated by the icon preceding the link: Title, Slide, 3D View, Animation or Topic



3

Alternatively, type your search term here

4

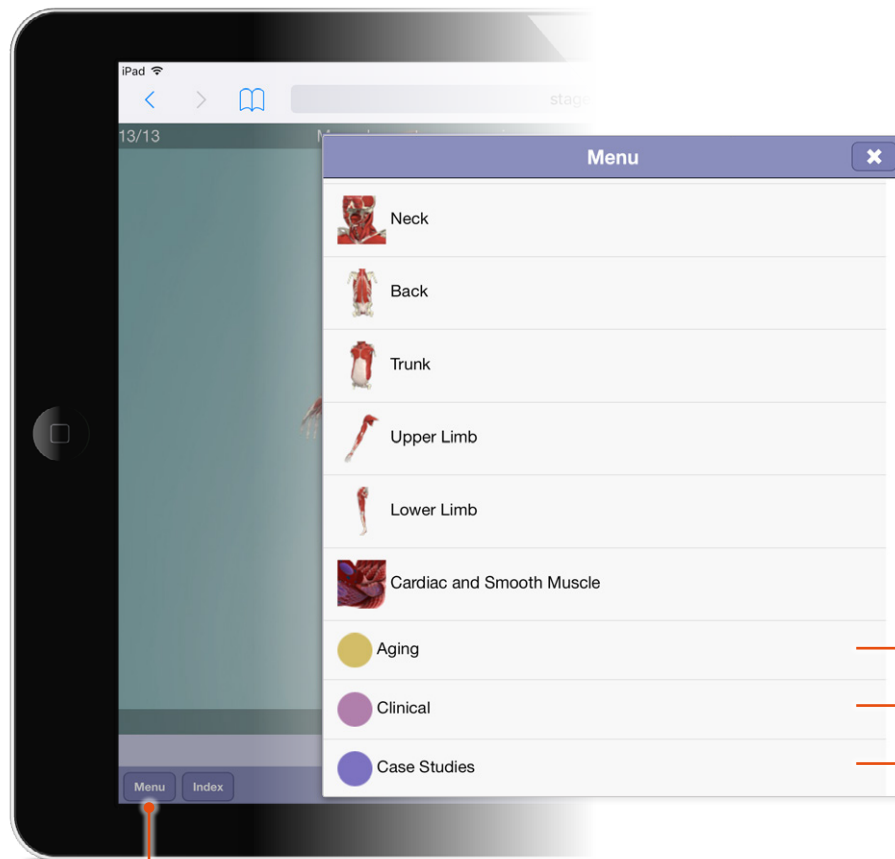
Tapping on the speaker icon allows you to hear the pronunciation of that structure name, or term

The Index button is located here

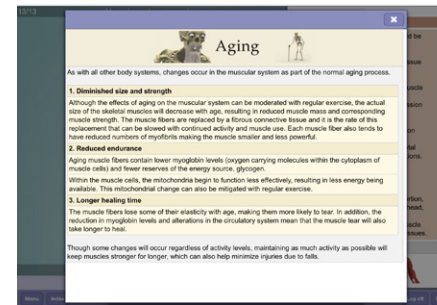
# Additional content – Aging, Clinical and Case studies



Scroll to the bottom of the topic **Menu** to access three types of additional content for the module.



Topic menu



## Aging

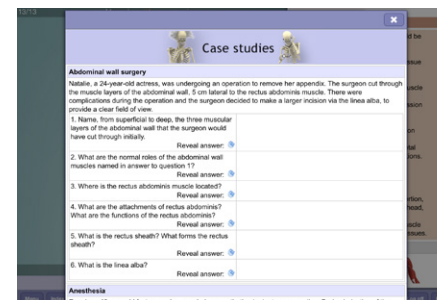
Learn about how aging affects the relevant body system



## Clinical

Learn about common clinical conditions associated with a particular body system

This section includes a number of clinical conditions, giving an overview of each followed by text on causes, symptoms, diagnosis, and treatment



## Case studies\*

Case studies are an excellent way to test your knowledge once you have completed a module

This section includes questions to test your knowledge and understanding of the causes, symptoms, diagnosis, and treatment of common clinical conditions

Tap on the arrow icons to reveal the answers

\* Only available if enabled by your course supervisor